

COMMUNITY UPDATE

Division of Community Development Newsletter

Newsletter

This is the June 2017 issue of the DCD newsletter. The newsletter is meant to be a resource for DCD employees to stay informed on DCD events, issues, and resources.

Did You Know...

There is a Navajo version of Wikipedia called Wikiibíídiya. Click the link below and take a look.



https://nv.wikipedia.org/wiki/%C3%8Diyis%C3%AD%C3%AD_Naaltsoos

Upcoming Events

June 18: Father's Day

July 4: HOLIDAY - Independence Day



DCD Assists With Community Project in Smith Lake

On Wednesday, June 14 through Friday, June 16, 2017, members of the DCD team led by Executive Director, Carl Smith, worked on repairing the roof of a house belonging to an veteran in Smith Lake. The team was also joined by representatives from the Office of the President and Vice-President, Navajo Facilities Maintenance Department, church groups, and other volunteers to get the house repaired.

On the first day, the team stripped off the old roofing. The roof was large and irregular in shape so it needed extra time to prepare. On the second day, the team began installing felt paper and replacement roofing shingles. The sky was mostly clear so the sun was

Division of Community Development • P.O. Box 1904,
Window Rock, AZ 86515 • (928) 871-7182 •
www.nndcd.org



bearing down on the team and the temperature began to climb into the 90's. The heat radiating off the hot shingles and roofing paper made the actual temperature experienced feel much hotter. On Friday, the team completed the installation of the shingles and the team's mission for that site. The local veteran's group would be working on the interior walls.

The young women on the DCD crew also rose to the challenge and took control of the roofing nailer to help the team complete a large portion of the nailing activities. Thanks to everyone that contribute to these projects!



Protect Yourself From the Heat

Heat exhaustion is one of a spectrum of heat-related illnesses that can occur when your body can no longer keep itself cool. Once heat exhaustion takes hold, you are at risk of a potentially fatal condition known as heat stroke. However, if you are proactive in dealing with your condition, you should be safe. Immediately take efforts to cool yourself off.



PREVENTING HEAT EXHAUSTION

Wear light-colored, loose-fitting, and lightweight clothing. This sort of attire will keep your body cool. Lighter colors can help reflect heat away from your body. Loose-fitting clothes allow air circulation around your body. Lightweight clothes will retain less heat.

Conversely, having your shirt off can actually increase your odds of heat exhaustion. Without a shirt you are exposed to more sun. A sweaty shirt can also act as a cooling device.

Protect your skin from the sun. Use sunscreen when you go outdoors. Try to cover your face with a wide-brimmed hat and sunglasses. Sunburn prevents your body from cooling down efficiently.

Sunscreen of SPF 30 or higher is best for warm weather.

Drink plenty of water. Even if you do not feel thirsty, keep drinking sips of water throughout the day. This will keep your body hydrated and help you to continue producing enough sweat to cool down your body.

OSHA recommends you drink water once every 15 minutes.



Rest in the shade to cool down.

Avoid caffeinated beverages and alcohol. These can act as diuretics, which move fluids out of the body too quickly. They can quickly dehydrate you, putting you at risk of heat exhaustion.

Sugary drinks, like sodas, slow down the absorption of water into your system.

Overly cold drinks can cause stomach cramps, which can also be a problem when exercising in warm weather.

Avoid warm areas. Air conditioning can significantly reduce the risk of heat stroke; if you don't have any consider going to a public place that does, like a shopping mall or library. Avoid places like the inside of a car, where temperatures can become particularly extreme.

Never leave children or dogs in your car for any period of time, even a very short one.

Take frequent breaks during physical activity. This will give you time to drink and rest. Your body will start to cool down a little each time you rest and hydrate. You will be less likely to become overheated this way.

Schedule vigorous activities for cooler times of the day. The hottest times of the day are between 10:00 a.m. and 6:00 p.m. When possible go outside before or after this time frame.

KNOWING WHEN TO BE CONCERNED

Recognize the symptoms. If you experience the following symptoms of heat exhaustion, start to cool yourself down immediately:

- Cool and moist skin
- Heavy sweating
- Faintness, dizziness, fatigue
- Weak and rapid pulse
- Muscle cramps

- Nausea
- Headaches
- Dehydration (signs include concentrated urine, with a stronger color and smell).



Be careful with the young and old. Those under four-years-old and over 65-years-old are most likely to suffer from heat exhaustion. Show extra precautions with people in these age groups.

Be careful with medication. Certain medications affect your ability to stay hydrated and regulate heat. These include high blood pressure and heart medications, allergy medications, tranquilizers, antipsychotics, and particularly diuretics. Some illegal drugs, like cocaine and amphetamines, have similar effects. Ask your doctor if any drugs you have been prescribed increase your chances of heat exhaustion.

Be mindful of weight. Obesity makes it more difficult to regulate body temperature. Your body will retain more heat putting you at greater risk of heat stroke.

Beware of sudden changes in the heat index. The heat index factors in both temperature and humidity. It might take your body a couple of weeks to adjust to a higher heat index than you are accustomed to. If you have recently relocated to a place with a much higher temperature or humidity, take some time to adjust before spending much time outside.

Humidity increase the likelihood of heat exhaustion as much as the actual temperature. High humidity prevents your sweat from evaporating, so that your body has more difficulty cooling itself.

Take a break after experiencing heat exhaustion. You are especially susceptible to heat exhaustion after you have already experienced it. Wait a week before spending extended periods exercising in warm weather.

SOURCE: <http://www.wikihow.com/Prevent-Heat-Exhaustion>

DCD Offices Receive Unexpected Fire Drill



Thursday morning, June 15, 2017 -- DCD Offices in Administration Building 2 were treated to an unexpected fire drill. The DCD team performed well and completed the evacuation of the building in less than two minutes with no people left behind. As the employees gathered outside at the designated area, an ambulance arrived followed by a fire truck. Fire fighters ran a fire hose up the south stairs and into the hallways as part of the drill. Any findings from the fire department will be sent in writing to the departments.

After the drill, the employees received a presentation from Larry Chee, Fire Chief, and Jennifer Collins, Firefighter, from the Navajo Nation Department of Fire and Rescue Services, and Dicky Bain and Wilfred Keeto, Senior Safety Technicians from the Navajo Nation Safety and Loss Control Program.

They offered some safety reminders for fire drills:

- Stay 100 feet away from the building
- Take a head count of each department
- Hold doors open to help everyone exit safely and quickly
- If there is ever a fire drill, turn off computer monitors
- Limit use of extension cords, and it should be not permanent use
- Walk-ways should be clear and items in hallways can obstruct safe evacuation
- In the break room, put away food items. Creamer is known to be flammable
- There should be an evacuation floor plan and employees should be made aware of plan
- Each manager should always account for their staff.

The instructors also pointed out that a designated person needs to be assigned to instruct others who were not present. Sharon Blatchford, Office Assistant, who participated in the fire drill remarked, "We learned something new, the new guidelines to keep up with. It's important to stay up to date with the safety information."

NM ICIP Data Entry Work Session



The Capital Project Management Department (CPMD) held their annual New Mexico ICIP Data Input Work Session on June 12 -13, 2017 at San Juan College. Sherylene Yazzie, Department Manager and Casey Begay provided the CPMD overview to the chapters in attendance. Mark Freeland provided New Mexico updates and announced the opening of the New Mexico Indian Affairs Tribal Infrastructure Fund (TIF) Portal.



The TIF Portal will be open from June 16th to July 17th. Proposals need to be submitted before 5:00 pm on July 17, 2017. Additional presentations included Jason John and Jessie Hillis from Water Management Branch and Jonathan Tso and Lavonne Benally from Navajo Headstart. Denise Copeland provided the New Mexico ICIP presentation.

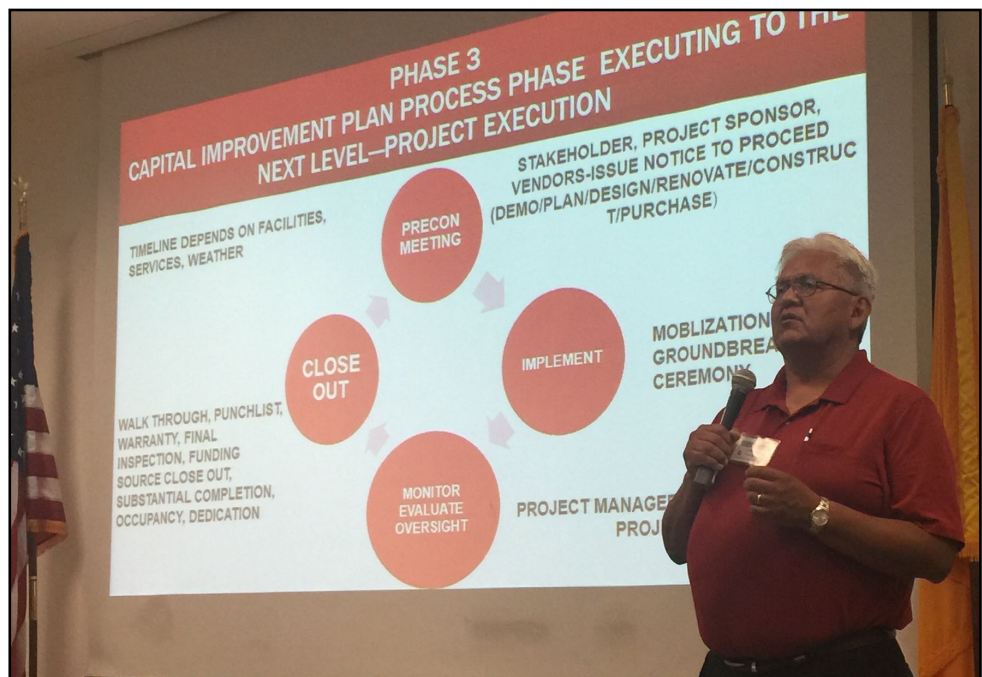
The NM ICIP is published annual on the NM Local Government Division website and is the planning



document for New Mexico legislators during the New Mexico legislative sessions for capital outlay and for various New Mexico departments which provide funding to communities throughout the State of New Mexico. The Navajo Nation submits NM ICIP for the Nation, 54 Navajo Chapters and 38 Seniors Centers located on the Navajo Nation within New Mexico.

The work session was attended by 43 chapters from Eastern, Ft. Defiance and Northern Agencies. In addition there were 22 staff from CPMD who provided technical assistance to the chapters to improve the information entered into the NM ICIP. The staff who provided assistance included the Department Manager, Planners, Principal Archaeologist, Project Managers, the Project/Program Specialist, the Electrical Inspector, Construction Supervisor, Engineers, the Planner/Estimator, Accountants, the CPMD Architect and office staff.

Submission date for the Tribal Entities (i.e. Chapters and Navajo Nation) into the NM ICIP is July 14, 2017 @ 5:00 pm. The required documents need to be emailed to ICIP.LGD@state.nm.us.





CPMD STAFF ATTEND OSHA AND AUTOCAD TRAINING

On Thursday, June 15 and Friday, June 16, 2017, staff from the CPMD department attended AutoCAD training in Gallup, NM. AutoCAD is software for computer-aided drafting and mapping. CPMD staff also completed OSHA training for safety in the workplace the week of June 19th. The training is a necessary part of the work that these CPMD employees do.

NAVAJO NATION ISSUES ORDER OF FIRE RESTRICTIONS

On Wednesday, June 21, 2017, stage I fire restrictions were put in place on the Navajo Nation. The Navajo Nation Office of the President/Vice-President and the BIA Regional Director jointly issued an executive order for the fire restrictions.

Link to order: <http://www.nnemaildist.navajonnsn.gov/Portals/35/Announcements/2017/sep/Executive%20Order%20Stage%20I%20Fire%20Restrictions.pdf>

BAHASTL'AH CHAPTER GROUND-BREAKING FOR JOHNSON ROAD IMPROVEMENTS

TWIN LAKES-On Thursday, Jun. 15, President Russell Begaye joined the Bahastl'ah Chapter in ground-breaking a project that will improve Johnson Road just north of Yatahey, N.M. on Highway 491.

<http://mailchi.mp/coredce37b87/press-release-improvements-to-johnson-road-are-the-culmination-of-partnership-efforts-says-president-begaye?e=577oabo7ba>

Navajo Nation Census Information Center News

Facts for Features: Father's Day: June 18, 2017

June 08, 2017

The idea of Father's Day was conceived more than a century ago by Sonora Dodd of Spokane, Wash., while she listened to a Mother's Day sermon in 1909. Dodd wanted a special day to honor her father, William Smart, a widowed Civil War veteran who was left to raise his six children on a farm. A day in June was chosen for the first Father's Day celebration, June 19, 1910, proclaimed by Spokane's mayor because it was the month of Smart's birth.

The first presidential proclamation honoring fathers was issued in 1966 when President Lyndon Johnson designated the third Sunday in June as Father's Day. Father's Day has been celebrated annually since 1972 when President Richard Nixon signed the public law that made it permanent.

For additional data related to fathers, please visit the following webpage:

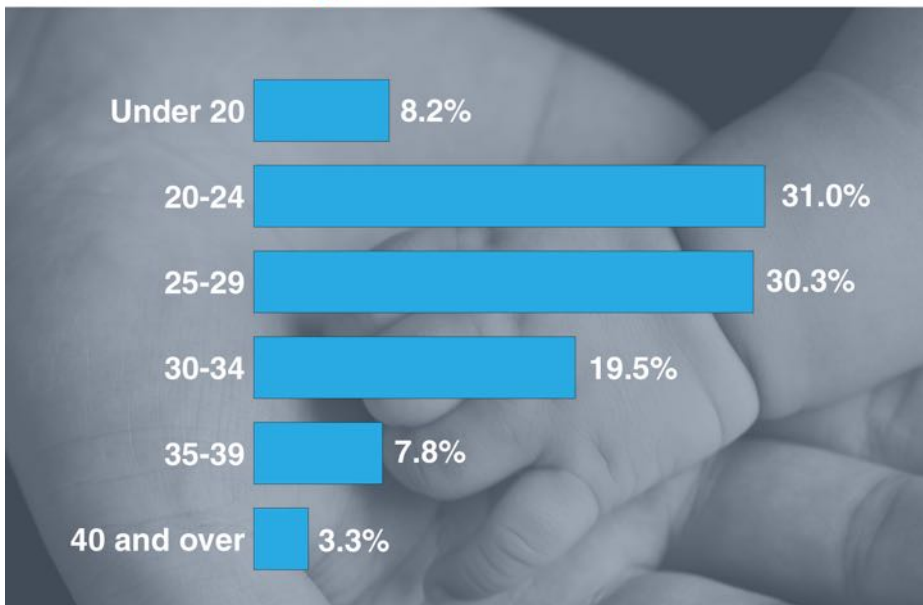
<https://www.census.gov/newsroom/facts-for-features/2017/cb17-ff12-fathers-day.html>



United States™
Census
Bureau

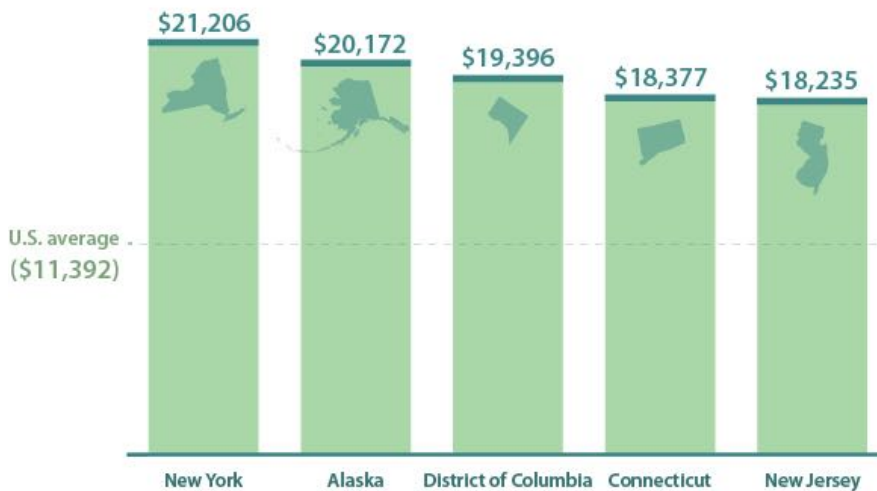
Being DAD

Father's age at birth of first child



States Leading Per Student Spending

Current Expenditures for Public Elementary-Secondary School Systems



	New York	Alaska	District of Columbia	Connecticut	New Jersey
Enrollment	2,631,532	130,755	46,155	505,366	1,339,230
Current expenditures B = billions	\$59.21B	\$2.65B	\$0.98B	\$9.60B	\$26.03B

Aging-Accessible Homes

How many of the 21.5 million homes with an adult age 65 and over have accessible features?

Kitchen features



Bedroom feature



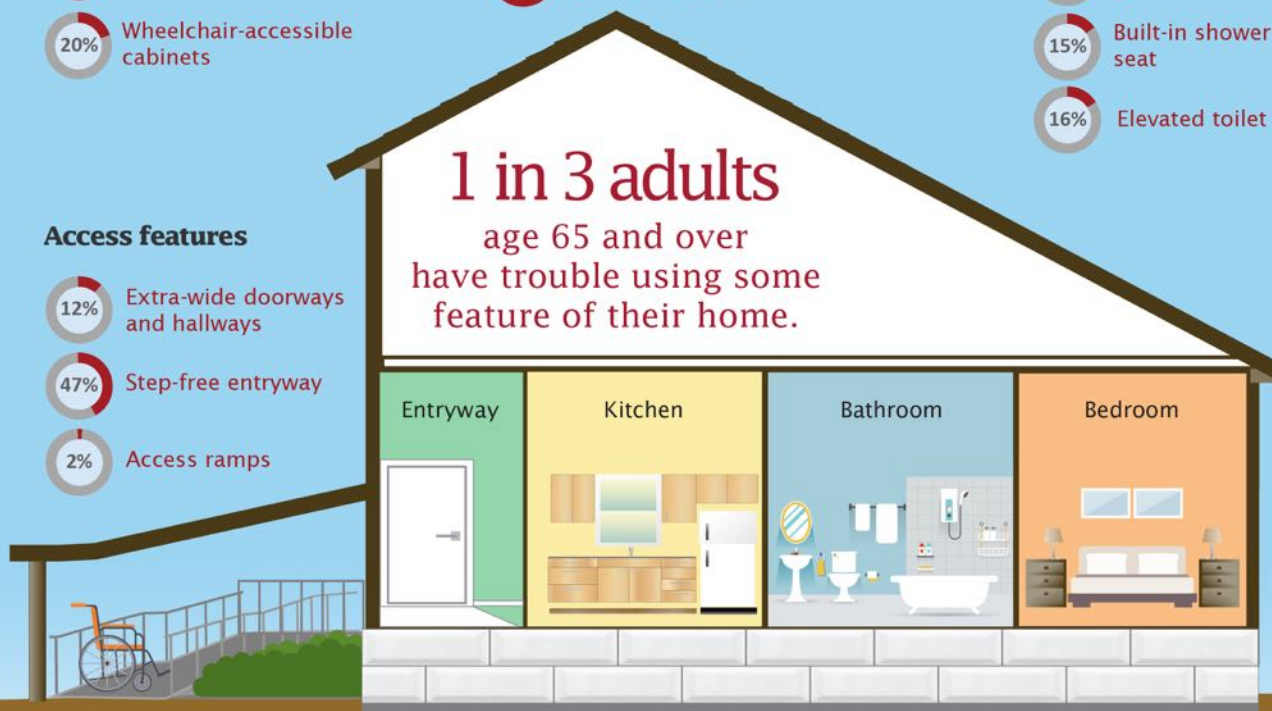
Bathroom features



Access features



1 in 3 adults
age 65 and over
have trouble using some
feature of their home.



Older adults with a disability (Ages 65 and over)

Difficulty bathing or dressing

Women 10%

Men 7%

Difficulty walking

Women 26%

Men 19%

Disabled older adults without accessibility features in their homes (Ages 65 and over)

Older adults with difficulty using the bathroom



Older adults with difficulty walking or climbing stairs



U.S. Department of Commerce
Economics and Statistics Administration
U.S. CENSUS BUREAU
census.gov



National Institute on Aging

Sources: U.S. Census Bureau, American Community Survey 2011-2015, and American Housing Survey 2011.
www.census.gov/programs-surveys/acs/
www.census.gov/programs-surveys/ahs.html

PERSONNEL NEWS

DCD OPEN POSITIONS**Administrative Service Centers**

Accountant - Baca, NM

Accountant - Crownpoint, NM

Accountant - Ft. Defiance, AZ

Chapter Community Services**Coordinators:**

Rough Rock, AZ

Wide Ruins, AZ

Lake Valley, NM

Chapter Accounts Maintenance**Specialists:**

Tsaile, AZ

Forest Lake, AZ

Lake Valley, NM

Whitehorse Lake, NM

Alamo, NM

Iyanbito, NM

Jeddito, AZ

Tsayatoh, NM

Red Valley, AZ

Kaibeto, AZ

Navajo Mountain, AZ

Capital Projects Management**Department:**

Project Manager - Tuba City, AZ

New Rural Addressing Staff

DCD welcomes Mr. Hollis Silversmith, Mr. Danny Tsosie, and Mr. Eric Haskie to the Rural Addressing team. The three new temporary staff will be helping with the Rural Addressing efforts and OPVP Community Projects underway at several chapters.

Welcome

Google Earth Chrome

Google makes the new Google Earth Chrome exclusive

by Martin Brinkmann on April 18, 2017 in Google - Last Update: April 18, 2017 22

Google unveiled a redesigned version of Google Earth today which, unlike its predecessor, is a web application. While that sounds good on first glance, as you may run Google Earth now without having to install software or an application first, the new version is limited to Google Chrome currently on the desktop.

The desktop version of Google Earth is still offered on the official site though, so that non-Chrome users may download and use the application in its older form.

Google notes that the new Google Earth works in Chrome on the desktop only. While that means support on Chromebook devices, and also better support on Linux, it also means that the new version of Google Earth is not available for users who run non-Chrome desktop browsers.

Changing the user agent does not help right now to get the new Google Earth to work in other browsers.

The company published a new application for Android which replicates the functionality of the new Google Earth.

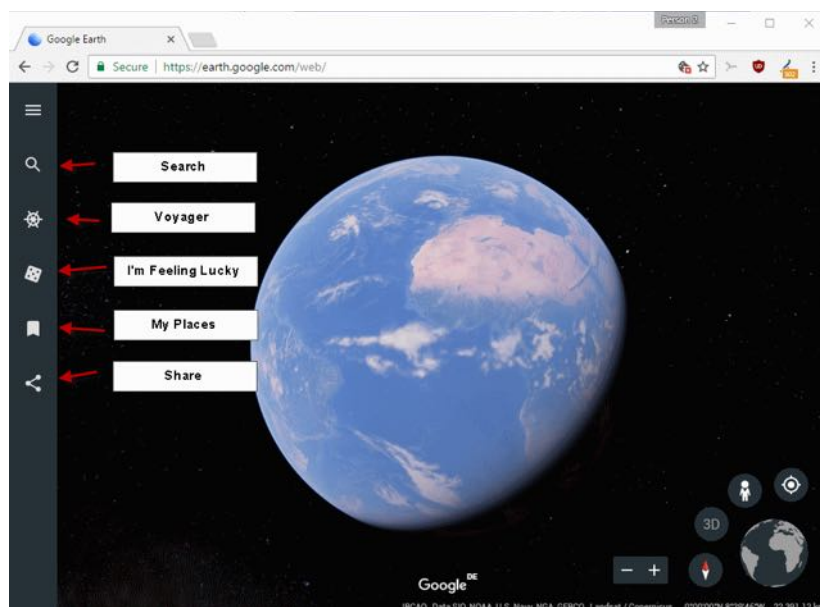
Google Earth for Chrome

The new version of Google Earth does not replicate all the functionality of the desktop version yet. The interface-and functionality has close resemblance to Google Maps, but you will notice that a lot of features and tools are missing from the implementation.

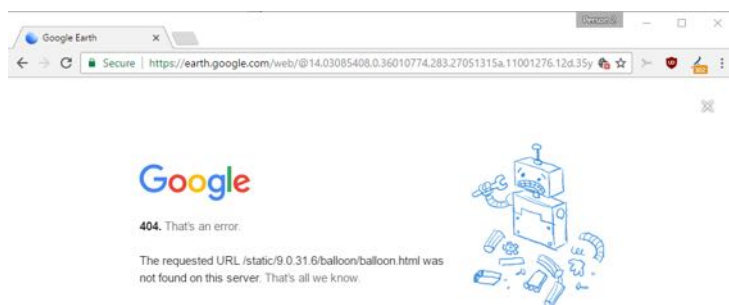
You may use the mouse and mouse wheel to rotate the globe, zoom in or out, and use the various controls offered on the web page.

The start page lists a handful of options on the left:

1. Search -- jump directly to a location. Simply type the name of a location, get a list of suggestions, and click on any to jump directly to the location on Google Earth.
2. Voyager -- features "interesting places and locations" on Earth.
3. I'm feeling lucky -- takes you to a random location on Earth.
4. My Places -- an option to add places, KLM or KMZ files. You may need to enable KML importing in the settings.
5. Share -- Share the current location on Facebook, Twitter, Google+, or as a direct link for other services and messaging formats.



The new Google Earth is a work in progress, and it shows. You may get error messages when you use certain features on the site. I could not get the Voyager feature to run at all after the initial screen that is displayed when you click on the icon.



Google Earth would always throw a 404. That's an error, error message stating that balloon.html was not found on the server.

You may run into other issues. KML support is not fully implemented yet for instance. Google acknowledges that most "creation tools" are missing that users of classic Google Earth have at their disposal.

Features that Google mentions specifically are:

- Measuring distances.
- Historical imagery.
- Time animations.
- GPS tracking.
- Flight simulator.
- Tour guides.

While Google plans to implement many of the missing features in the future, it is unclear whether some features will not make the cut.

Closing Words

The new Google Earth is not a replacement yet for the classic desktop application. It is fine for some basic searching, browsing, and looking around though. The experience that the new Google Earth web application offers is quite good, at least from a usability point of view.

It is easy to use, and the performance is good as well.

Major downside, apart from the features that it does not support, is that it is Chrome exclusive currently. This, like many other things, will probably change in the future.

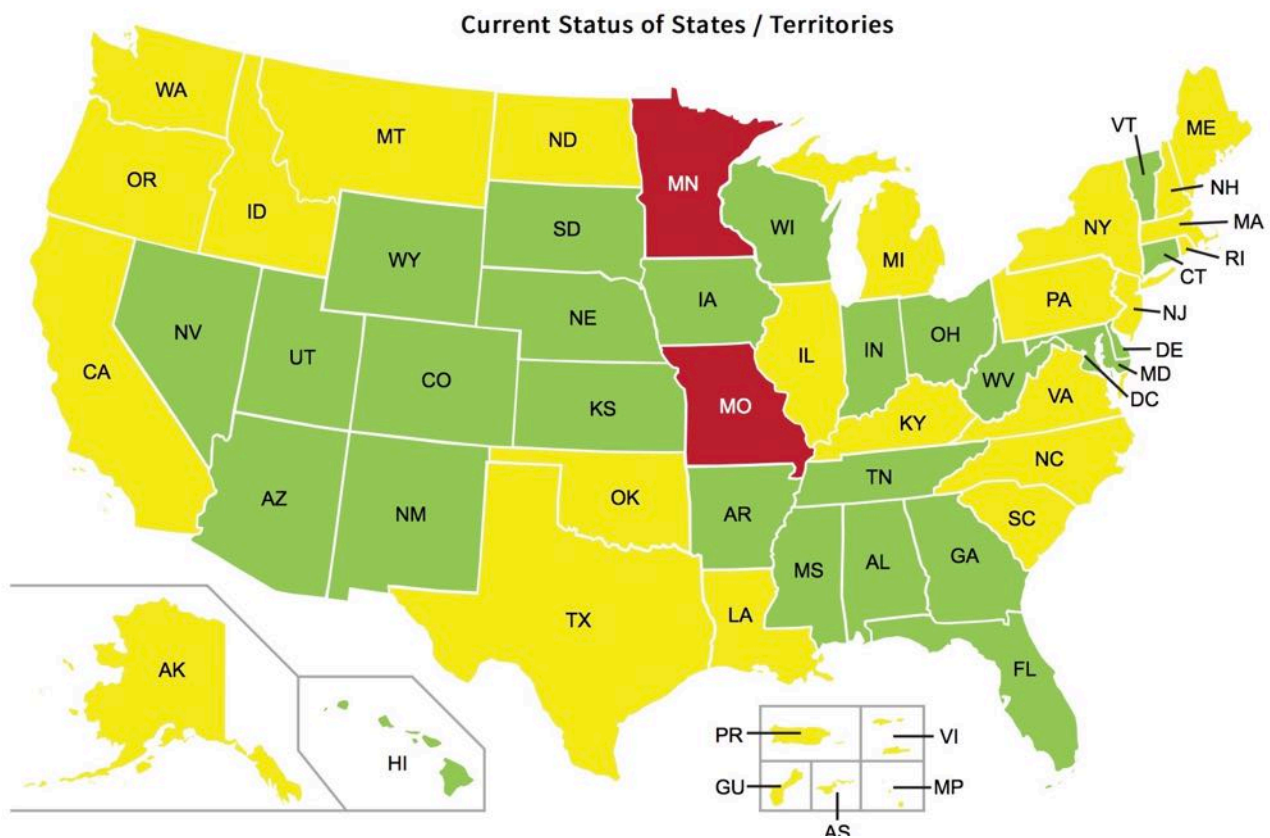
For now though, you can only use the new Google Earth if you use Chrome or Android.

<https://goo.gl/Vvuyqe>

STATES' IMPLEMENTATIONS OF REAL ID LAW POSES CHALLENGES FOR RURAL ADDRESSING SECTION

The federal government passed the REAL ID Act on May 11, 2005 acting upon recommendations from the 9/11 Commission. The Act deals in part with increased security standards for issuance of state driver's licenses and identity documents. In the United States, driver's licenses have been used as a standard form of identification. For non-drivers, states also issue voluntary identification cards which do not grant driving privileges.

Prior to the REAL ID Act, each state set its own rules and criteria regarding the issuance of a driver's license or identification cards. The Real ID Act established specific federal standards that changed the documentation requirements for driver's licenses and state-issued ID cards.



Currently, the state of New Mexico has begun implementing a new process for renewing driver's licenses and state ID cards that is compliant with the REAL ID Act's security requirements. Arizona and New Mexico are also compliant with the REAL ID Act for driver's license and ID security requirements. What this means for many

Navajos living in New Mexico, Arizona, and Utah that need to renew their driver's license or state ID card, is that they need to follow the new REAL ID-compliant process that these states provide.

In the larger United States, the standard address format is the street address, typically a number indicating a distance followed by the name of the street. Since many areas of the Navajo Nation have not been addressed yet, there are no street or rural addresses that can be used to meet the residency requirements. Because of this, the state of New Mexico is now requiring Navajos that don't have a street or rural address to go to the Navajo Nation Rural Addressing Office to obtain an address verification.

Due to the large numbers of people needing the verifications, the office routinely becomes backlogged with requests which results in some frustration from clients. The Rural Addressing staff work hard each day to try to reduce the backlogs and get the verifications out as soon as possible.

The process to get a Personal Address Verification (PAV) letter goes like this:

- 1) The client submits a request to the Rural Addressing Office either in person or by mail
- 2) The client is given a form to complete and submit back to the office
- 3) The client information is then cross-referenced through the system until matching information is found that verifies the person and the location of the home
- 4) The home is located on a map and geographic coordinates are taken
- 5) A Personal Address Verification letter is generated with the geographic coordinates and other information.

If the client provides all the required documents and information, a typical PAV takes about 30-40 minutes to be completed. On a typical day, the office sees anywhere from 20-50 requests come into the office. The Rural Addressing staff report that the PAV requests that get delayed are usually cases where the client doesn't provide all the necessary information or where required documents are not provided.

SOURCES:

https://en.wikipedia.org/wiki/REAL_ID_Act

<http://www.dhs.gov>

<http://www.mvd.newmexico.gov/renew-a-new-mexico-driver-s-license.aspx>

Local Governance Certified Chapters

Chapter	Agency	LGA Cert. Date		Chapter	Agency	LGA Cert. Date
1 Nahata Dziil	Ft. Defiance	8/16/02		1 Newcomb	Northern	6/18/04
2 Steamboat	Ft. Defiance	5/30/03		2 San Juan	Northern	3/7/07
3 Cornfields	Ft. Defiance	7/14/10		3 Tse'Daa'Kaan	Northern	6/21/07
4 Naschitti	Ft. Defiance	11/22/10		4 Sheepsprings	Northern	8/24/07
5 Lupton	Ft. Defiance	11/24/10		5 Tolikan	Northern	11/29/10
6 Dilkon	Ft. Defiance	12/21/10		6 Toadlena/Two Grey Hills	Northern	1/10/11
7 Greasewood Springs	Ft. Defiance	12/21/10		7 Burnham	Northern	7/11/11
8 Kinlichee	Ft. Defiance	12/29/10		8 Beclabito	Northern	1/10/12
9 Teesto	Ft. Defiance	7/11/11		9 Mexican Water	Northern	2/7/12
10 Ganado	Ft. Defiance	12/2/14		10 Upper Fruitland	Northern	2/28/12
11 Houck	Ft. Defiance	12/2/14		11 Aneth	Northern	3/31/15
12 Ft. Defiance	Ft. Defiance	1/15/16		12 Cove	Northern	4/5/15
TOTAL: 12				TOTAL: 12		

Chapter	Agency	LGA Cert. Date		Chapter	Agency	LGA Cert. Date
1 Shonto	Western	9/22/99		1 Chinle	Chinle	12/21/10
2 Tuba City	Western	12/27/04		2 Pinon	Chinle	2/21/12
3 Kayenta	Western	8/6/10		3 Whippoorwill Springs	Chinle	12/2/14
4 Bodaway/Gap	Western	12/21/10		4 Nazlini	Chinle	2/17/15
5 Birdsprings	Western	7/11/11		TOTAL: 4		
6 Chilchinbeto	Western	7/11/11				
7 Leupp	Western	7/11/11				
8 LeChee	Western	1/31/12				
9 Dennehotso	Western	2/14/12				
10 Tonalca	Western	12/2/14				
11 Ts'ah Bii' Kin	Western	6/24/16				
TOTAL 11						

Chapter	Agency	LGA Cert. Date
1 Littlewater	Eastern	11/15/07
2 Baahaali	Eastern	12/24/08
3 Whiterock	Eastern	12/21/10
4 Ojo Encino	Eastern	3/6/12
5 Baca/Prewitt	Eastern	12/22/14
6 Casamero Lake	Eastern	4/15/15
TOTAL: 6		

TOTAL CERTIFICATION : 45

